

## Entocentric lenses up to 1.2" imager

vicotar®

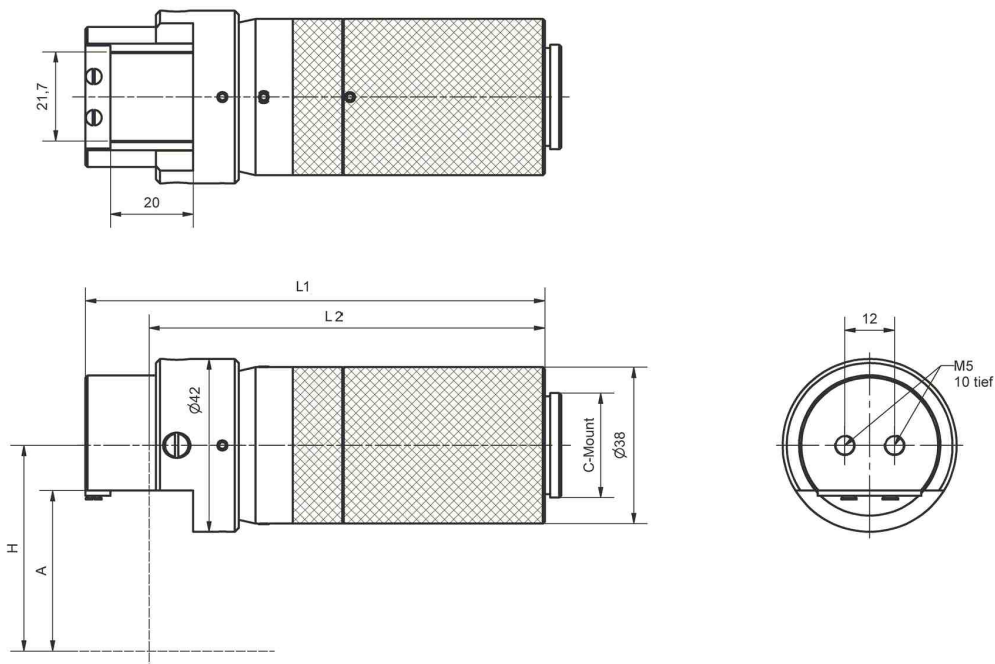
RWQ series, lenses with folded optical path

### Product features

- Lenses which bend the optical path through a right angle
- Application for matrix and line cameras up to sensor diagonal/length 21.4 mm
- To used when the mounting space is restricted
- Low distortion
- Manual operated iris aperture with fixing
- Robust industrial design: dust-proof, shock-proof
- C-mount (thread connection)



### Engineering drawing



Download  
Manual



Download  
CAD-File



Up to  
1.2"  
imager

### Properties

#### Optical properties

Spectral range 380...900nm / colour-corrected / fast lenses

#### Mechanical properties

Flange focal distance 17.53mm / max. diameter of lenses 42mm / two M5 mounting holes on the end face / camera side filter thread M20 x 0.5 / environmental temperature -10°C ... 50°C



## Entocentric lenses up to 1.2" imager

vicotar® RWQ series, lenses with folded optical path

### Optical data

Name	Order no.	Lateral magnification	Image side aperture (adjustable)	Field of view for 1.2" sensor [mm <sup>2</sup> ]	Field of view for 1" sensor [mm <sup>2</sup> ]	Field of view for 3/4" sensor [mm <sup>2</sup> ]	Field of view for 1/2" sensor [mm <sup>2</sup> ]	Field of view for 1/3" sensor [mm <sup>2</sup> ]
RWQ 30-1,3	2-10-355	-1,3 : 1	0,044 ... 0,012	11,7 x 11,7	9,8 x 7,4	6,8 x 5,1	4,9 x 3,7	3,7 x 2,8
RWQ 30-1,0	2-10-356	-1 : 1	0,050 ... 0,014	15,2 x 15,2	12,8 x 12,8	8,8 x 6,6	6,4 x 4,8	4,8 x 3,6
RWQ 30-0,89	2-10-357	-1 : 1,12	0,054 ... 0,015	17,0 x 17,0	14,4 x 10,8	9,9 x 7,4	7,2 x 5,4	5,4 x 4,0
RWQ 30-0,67	2-10-358	-1 : 1,49	0,061 ... 0,017	22,6 x 22,6	19,1 x 14,3	13,1 x 9,9	9,6 x 7,2	7,2 x 5,4
RWQ 30-0,59	2-10-359	-1 : 1,69	0,064 ... 0,018	25,7 x 25,7	21,7 x 16,3	14,9 x 11,2	10,9 x 8,1	8,1 x 6,1
RWQ 30-0,42	2-10-360	-1 : 2,38	0,072 ... 0,020	36,1 x 36,1	30,5 x 22,9	21,0 x 15,7	15,2 x 11,4	11,4 x 8,6
RWQ 30-0,38	2-10-361	-1 : 2,63	0,074 ... 0,021	39,9 x 39,9	33,7 x 25,3	23,2 x 17,4	16,8 x 12,6	12,6 x 9,5
RWQ 50-0,37	2-10-362	-1 : 2,70	0,088 ... 0,009	41,0 x 41,0	34,6 x 26,0	23,8 x 17,8	17,3 x 13,0	13,0 x 9,7
RWQ 30-0,35	2-10-363	-1 : 2,86	0,083 ... 0,022	43,3 x 43,3	36,6 x 27,4	25,1 x 18,9	18,3 x 13,7	13,7 x 10,3
RWQ 30-0,24	2-10-364	-1 : 4,17	0,083 ... 0,024	63,2 x 63,2	55,3 x 40,0	36,7 x 27,5	26,7 x 20,0	20,0 x 15,0
RWQ 30-0,18	2-10-365	-1 : 5,56	0,087 ... 0,025	84,2 x 84,2	71,1 x 53,3	48,9 x 36,7	35,6 x 26,7	26,7 x 20,0
RWQ 50-0,17	2-10-366	-1 : 5,88	0,094 ... 0,010	89,2 x 89,2	75,3 x 56,5	51,8 x 38,8	37,7 x 28,2	28,2 x 21,2
RWQ 50-0,12	2-10-367	-1 : 8,33	0,099 ... 0,010	126 x 126	107 x 80,0	73,3 x 55,0	53,3 x 40,0	40,0 x 30,0
RWQ 30-0,067	2-10-368	-1 : 14,93	0,097 ... 0,028	226 x 226	191 x 143	131 x 99	95,5 x 71,6	71,6 x 53,7

Size of imaging device:

1.2" - 15.2 x 15.2 mm<sup>2</sup> | 1" - 12.8 x 9.6 mm<sup>2</sup> | 3/4" - 8.8 x 6.6 mm<sup>2</sup> | 1/2" - 6.4 x 4.8 mm<sup>2</sup> | 1/3" - 4.8 x 3.6 mm<sup>2</sup>

### Mechanical data

Name	Order no.	Max. object field diameter	Working distance	Total length L1	Length L2	Height of opt. axis H	Weight
RWQ 30-1,3	2-10-355	16,5 mm	17 mm	112 mm	96 mm	29 mm	270 g
RWQ 30-1,0	2-10-356	11 mm	25 mm	102 mm	86 mm	37 mm	250 g
RWQ 30-0,89	2-10-357	24,1 mm	29 mm	99 mm	83 mm	41 mm	230 g
RWQ 30-0,67	2-10-358	32,0 mm	41 mm	92 mm	76 mm	53 mm	200 g
RWQ 30-0,59	2-10-359	36,3 mm	47 mm	89 mm	73 mm	59 mm	190 g
RWQ 30-0,42	2-10-360	51,1 mm	67 mm	84 mm	68 mm	79 mm	170 g
RWQ 30-0,38	2-10-361	56,4 mm	77 mm	83 mm	67 mm	89 mm	160 g
RWQ 50-0,37	2-10-362	57,9 mm	157 mm	111 mm	95 mm	169 mm	120 g
RWQ 30-0,35	2-10-363	61,3 mm	83 mm	82 mm	66 mm	95 mm	150 g
RWQ 30-0,24	2-10-364	89,3 mm	122 mm	79 mm	63 mm	134 mm	130 g
RWQ 30-0,18	2-10-365	119 mm	170 mm	77 mm	61 mm	184 mm	120 g
RWQ 50-0,17	2-10-366	126 mm	310 mm	101 mm	86 mm	322 mm	110g
RWQ 50-0,12	2-10-367	179 mm	470 mm	99 mm	83 mm	472 mm	100 g
RWQ 30-0,067	2-10-368	320 mm	450 mm	73 mm	57 mm	462 mm	100 g

## Entocentric lenses up to 1.2" imager

vicotar® RWQ series, lenses with folded optical path

### Important advice

#### Care instruction

Clean easily dirty lens with an optics brush or cleaned air. Adherent contamination can be removed by using an optical cleaning tissue. Please use only alcohol as a solvent, do not use acetone or other chemicals.

### Accessories

Order no.	Name	Description
2-91-131	IR M20,5 x 0,5	daylight suppression filter for telecentric lens-systems
2-91-151	NF4 M20,5 x 0,5	neutral density filter, 4 x for telecentric lens-systems
2-91-171	NF1000 M20,5 x 0,5	neutral density filter, 1000 x for telecentric lens-systems
2-91-259	RF M20,5 x 0,5	red filter

### Intended use for accessories

RWO lens with filter

