

## Accessories

vicotar®

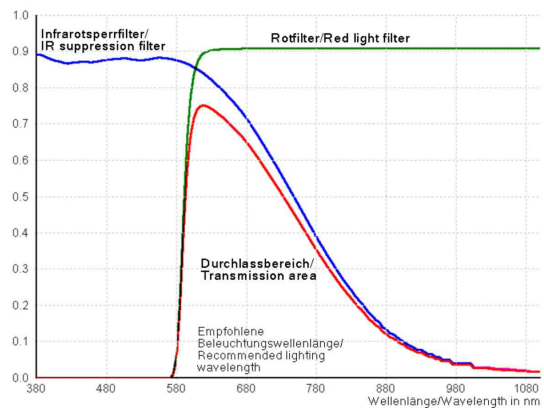
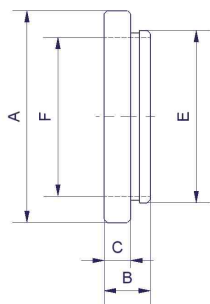
Red filters

### Product features

- Red filters only lets through light with wavelengths longer than 610 nm
- The red filter used in combination with IR barrier filters produces a narrow transmission band for the wavelength of the LED lighting unit
- Non-reflecting
- Standardized thread



### Drawing and spectral transmissivity



### Important advice

#### Red filter combined with IR barrier filter of the camera

Vision & Control recommends a deep red LED lighting unit (>660 nm) because CCD/CMOS sensors are four times as sensitive to red light as to infrared light. The infrared barrier filter included in the camera as supplied prevents interference from IR light. An additional red filter screwed on in front of the objective only lets through light with wavelengths longer than 610 nm.

### Notes

## Accessories

vicotar®

Red filters

### Optical data

Name	Order no.	External diameter A [mm]	B [mm]	C [mm]	E	Free inner diameter F [mm]
RF M19 x 0,5	2-91-258	21	6,5	4,3	M19×0,5	15,8
RF M20,5 x 0,5	2-91-259	23	5	1	M20,5×0,5	18
RF M27 x 0,5	2-91-265	29	6,5	4	M27×0,5	25
RF M30,5 x 0,5	2-91-267	32	6,5	4	M30,5×0,5	26
RF M30 x 0,5	2-91-266	32	6,5	4	M30×0,5	26
RF M34 x 0,5	2-91-260	40	15	5	Ø 34 mm	30
RF M39 x 0,5	2-91-261	40,5	7	5	M39×0,5	35
RF M40,5 x 0,5	2-91-268	42	6,5	4	M40,5×0,5	36
RF M46 x 0,75	2-91-269	48	8	5,5	M46×0,75	41
RF M52 x 0,75	2-91-262	54	6,5	4	M52×0,75	4,8
RF M67 x 0,75	2-91-263	70	6,5	4	M67×0,75	6,3
RF M100 x 1,0	2-91-264	104	9	6	M100×1	83

### Accessories

Filter adapter M26x0.5 - M27x0.5 Order no. 2-91-112